

Bradley

MODEL 220-301 AUTOMATIC HAND DRYER



PRODUCT FEATURES:

- Satin finish
- Wall mounted
- 240v, 950w, 10 amp
- Ideal for mid to high volume public washrooms

Overall Dimensions

300mm W x 275mm H x 100mm D

PRODUCT DATA:

CONSTRUCTION:

OUTER CASE: Manufactured of type 304 stainless steel, 2mm thick, featuring vandal resistant key.

MOTOR: Long-life energy saver.

ELECTRICAL SPECIFICATIONS:

ELECTRICAL SUPPLY:	240V / 50/60Hz
MOTOR:	250W
ELEMENT:	950W / 0-40°C / AC110V
AIR VELOCITY:	80m/sec
NOISE LEVEL:	72db
NETT WEIGHT:	4.2kg
PROTECTION CATEGORY:	IPX1

RECOMMENDED INSTALLATION HEIGHT:

Men's Washroom	1200mm
Women's Washroom	1150mm
Children's Washroom (ages 11-15)	1110mm
Children's Washroom (ages 5-10)	850mm
Disabled Person's Washroom	1000mm

OPERATION:

Activation by infra-red (touch free) sensor.

INSTALLATION:

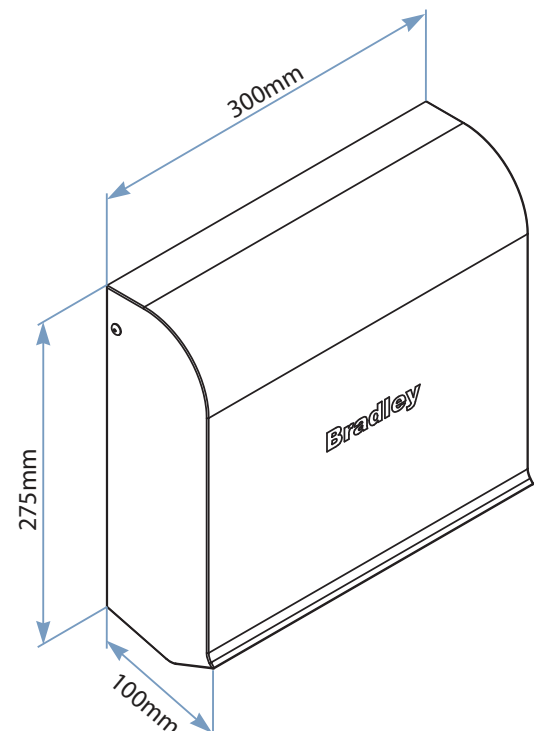
Requires 10 amp power supply. Secure to wall through back-plate with mounting screws provided.

Minimum 300 mm distance required underneath sensor from bench/basin.

GUIDE SPECIFICATION:

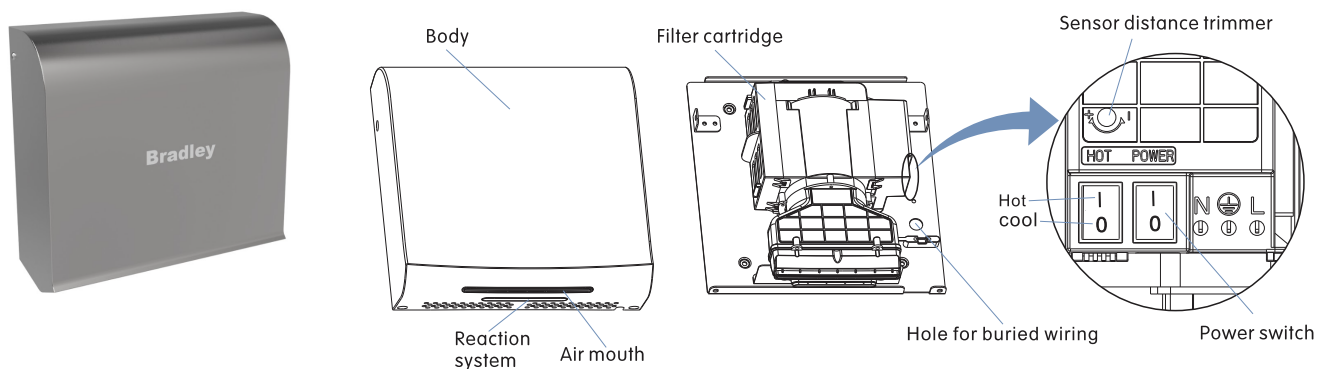
Surface mounted automatic hand dryer shall be fabricated of type 304 stainless steel, 2mm thick, featuring vandal-resistant key and concealed nozzle. Motor long-life energy saver. 10 to 15 seconds drying time.

***Refer to page 2 for installation instructions**

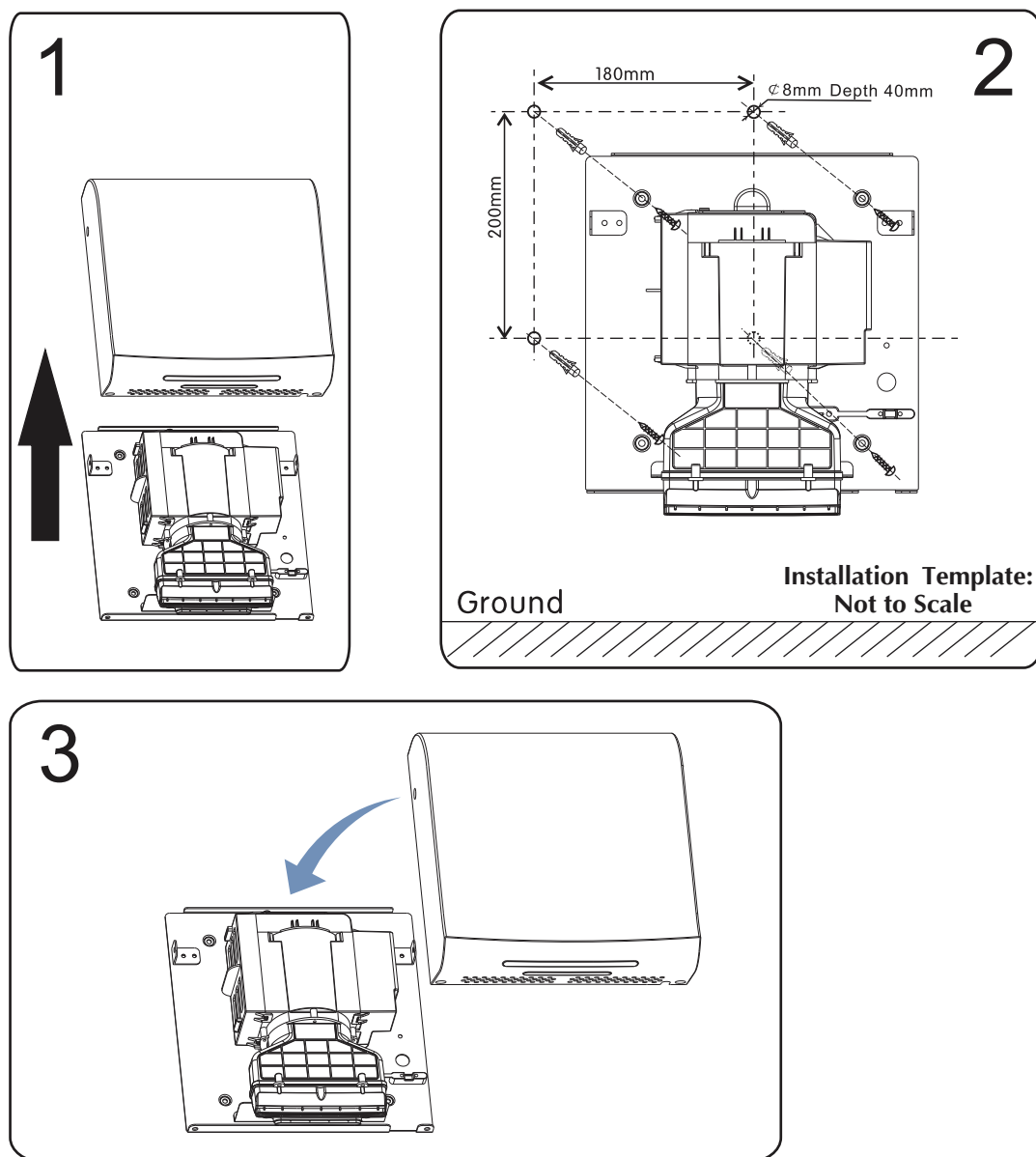


Bradley

MODEL 220-301 AUTOMATIC HAND DRYER

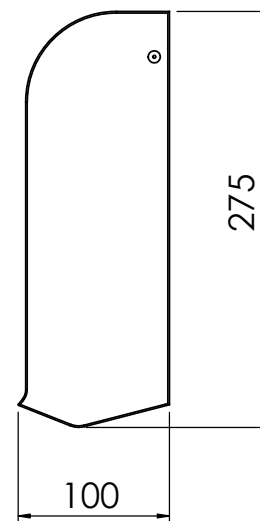
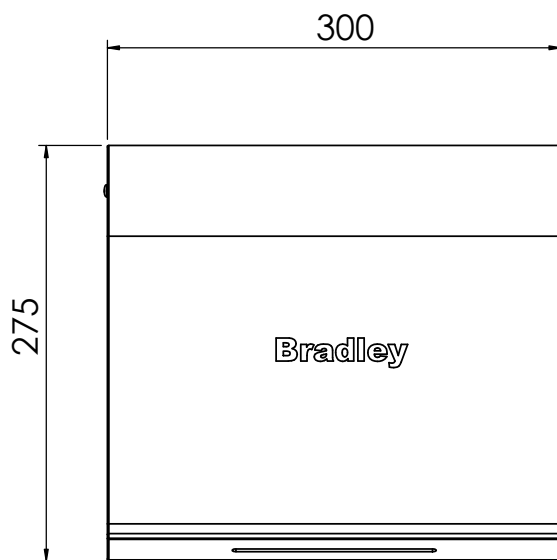
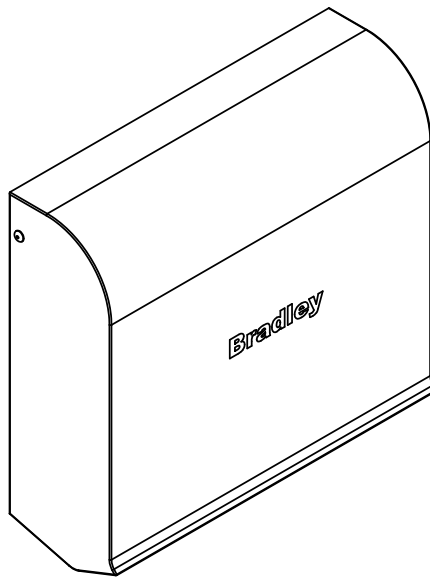


METHOD OF INSTALLATION



1300 364 561

The manufacturer reserves the right to make changes in design and material without formal notice and without incurring obligation.



Bradley

DWG NO.	220-301
APPROVED BY:	
Proudly customised design please approve	SCALE: 1:5